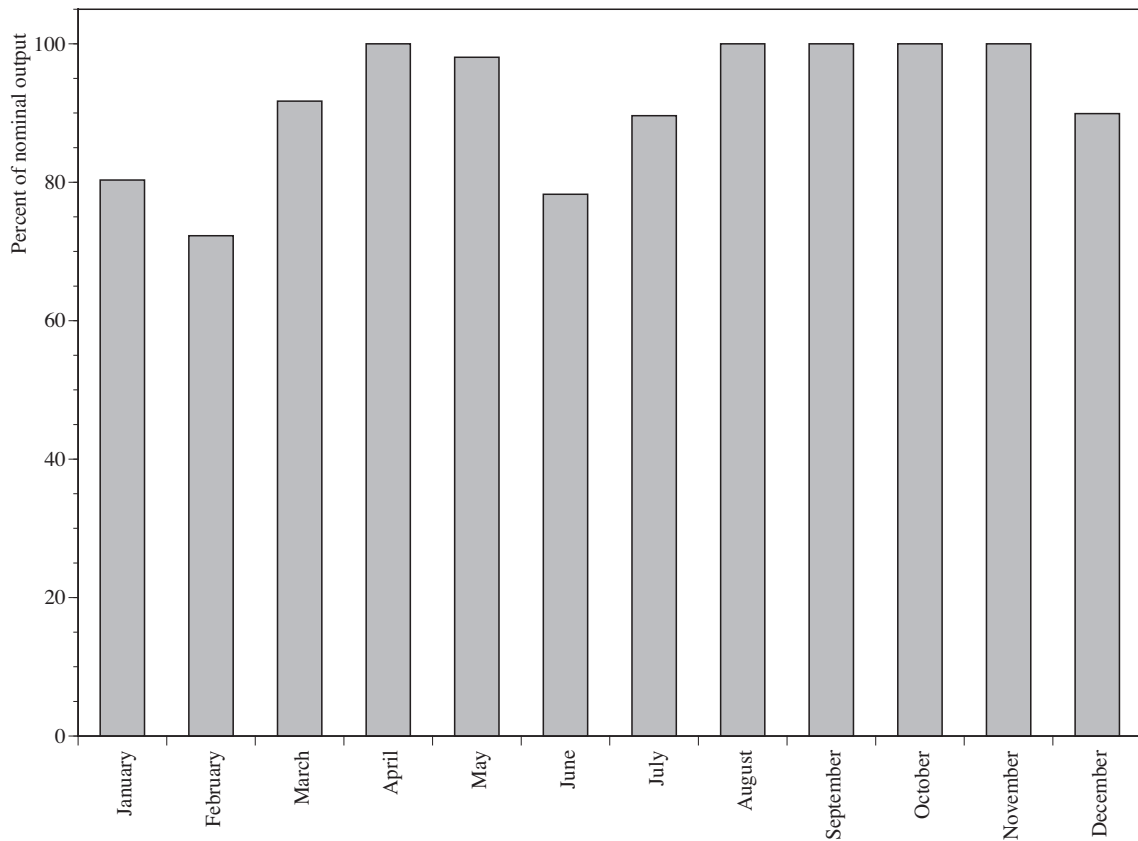
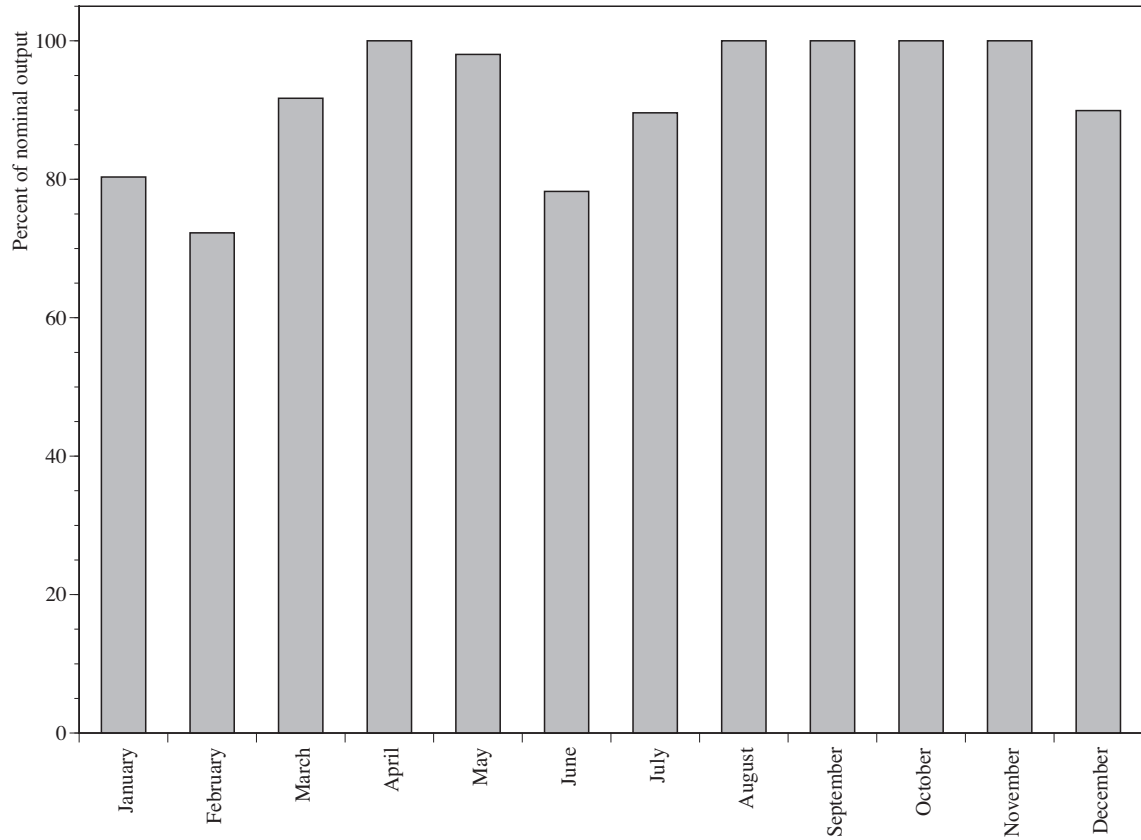


## 13 Appendix - Nominal Monthly Hydropower Output



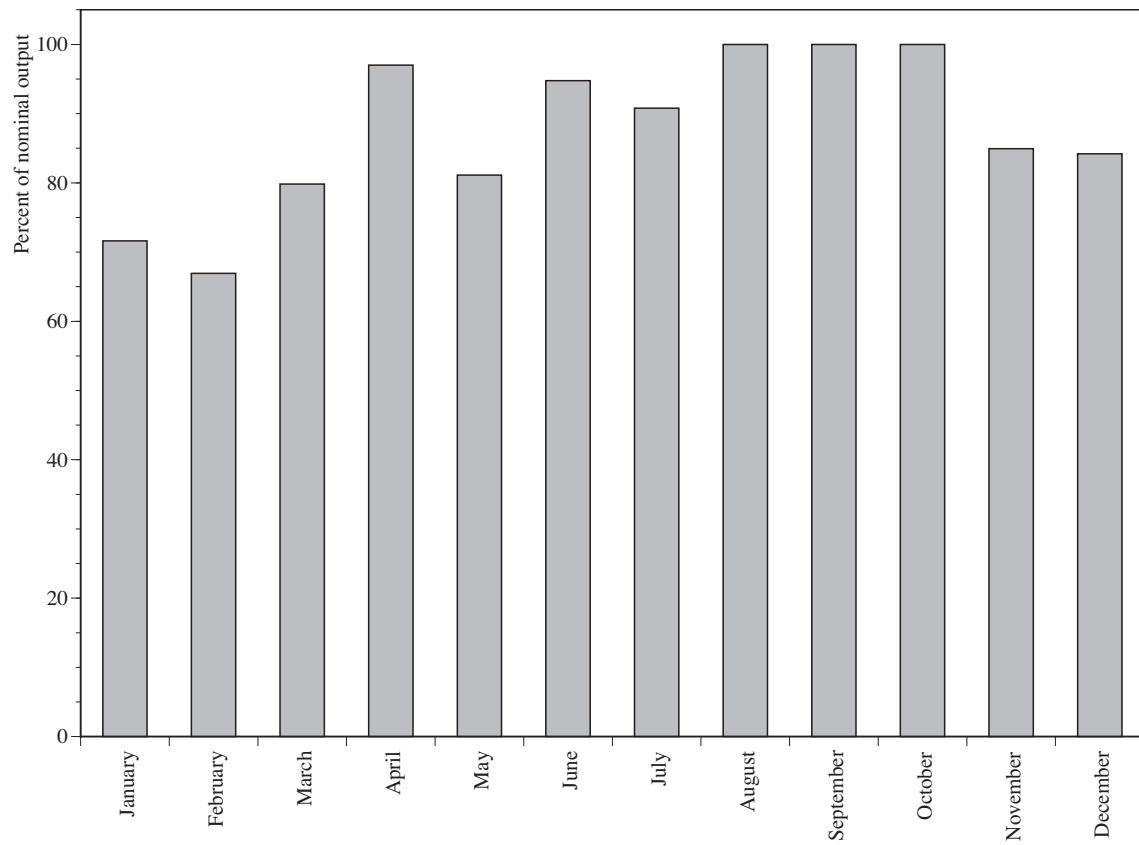
Source: ERJ, Datasource : River Bureau Ministry of Land, Infrastructure and Transport.

Figure 134 : Percentage of nominal output of Hydropower in Hokkaido East.



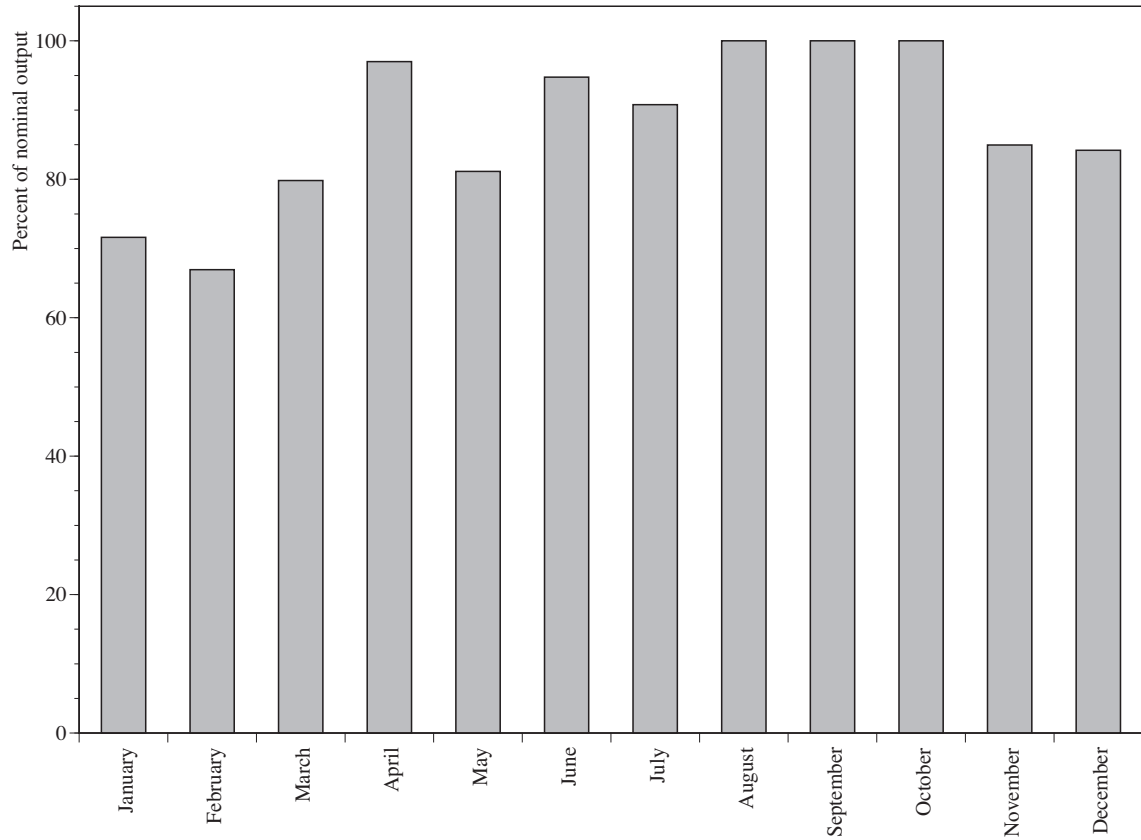
Source: ERJ, Datasource : River Bureau Ministry of Land, Infrastructure and Transport.

Figure 135 : Percentage of nominal output of Hydropower in Hokkaido West.



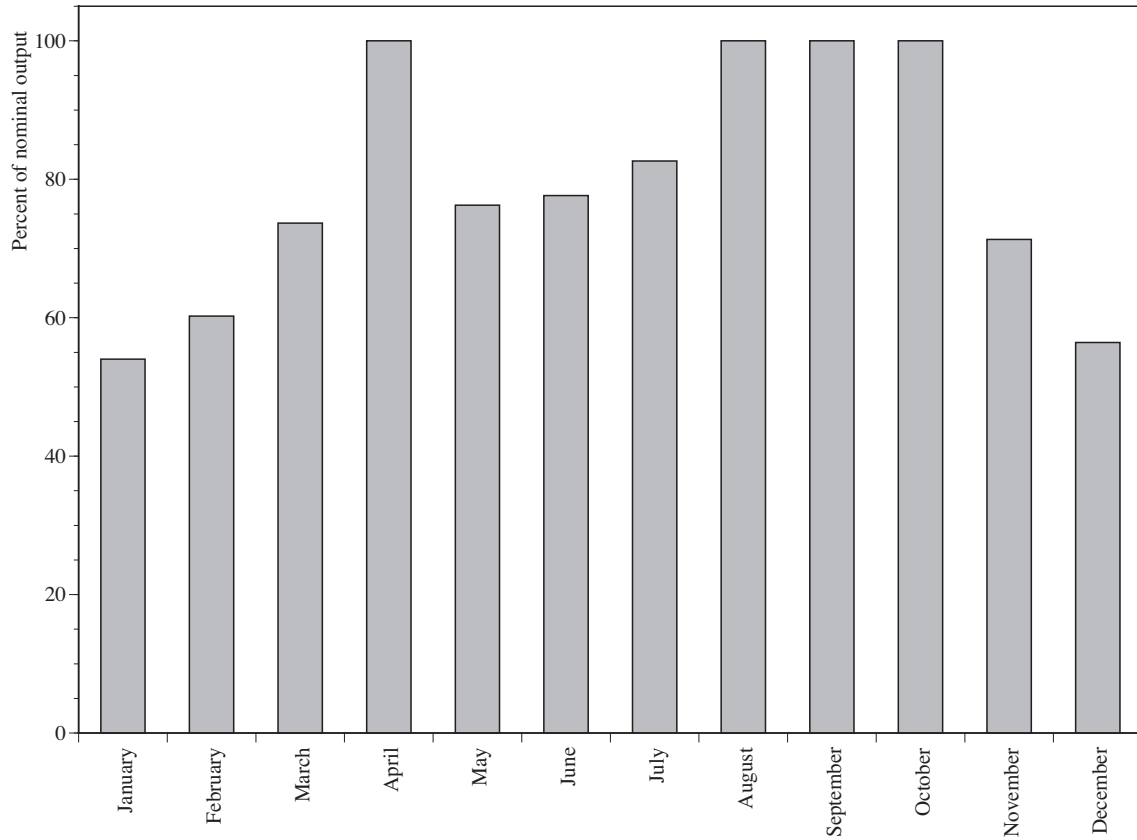
Source: ERJ, Datasource : River Bureau Ministry of Land, Infrastructure and Transport.

Figure 136 : Percentage of nominal output of Hydropower in Tohoku East.



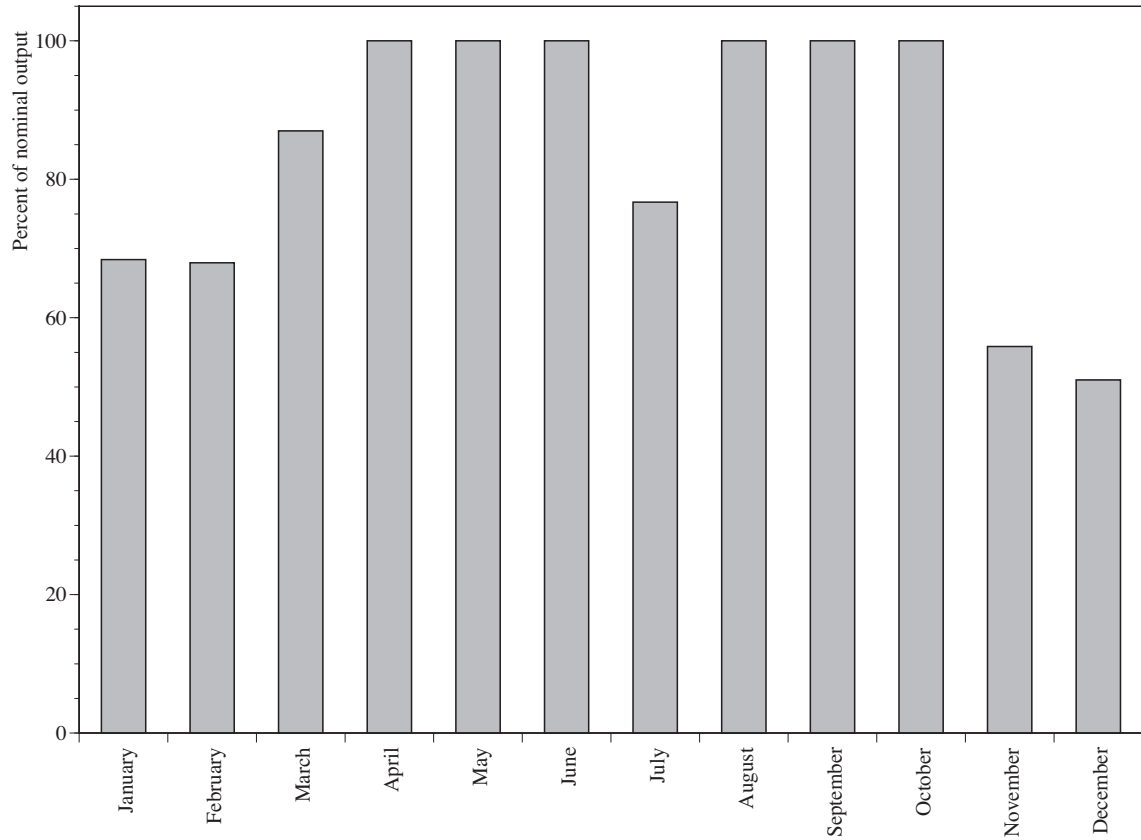
Source: ERJ, Datasource : River Bureau Ministry of Land, Infrastructure and Transport.

Figure 137 : Percentage of nominal output of Hydropower in Tohoku West.



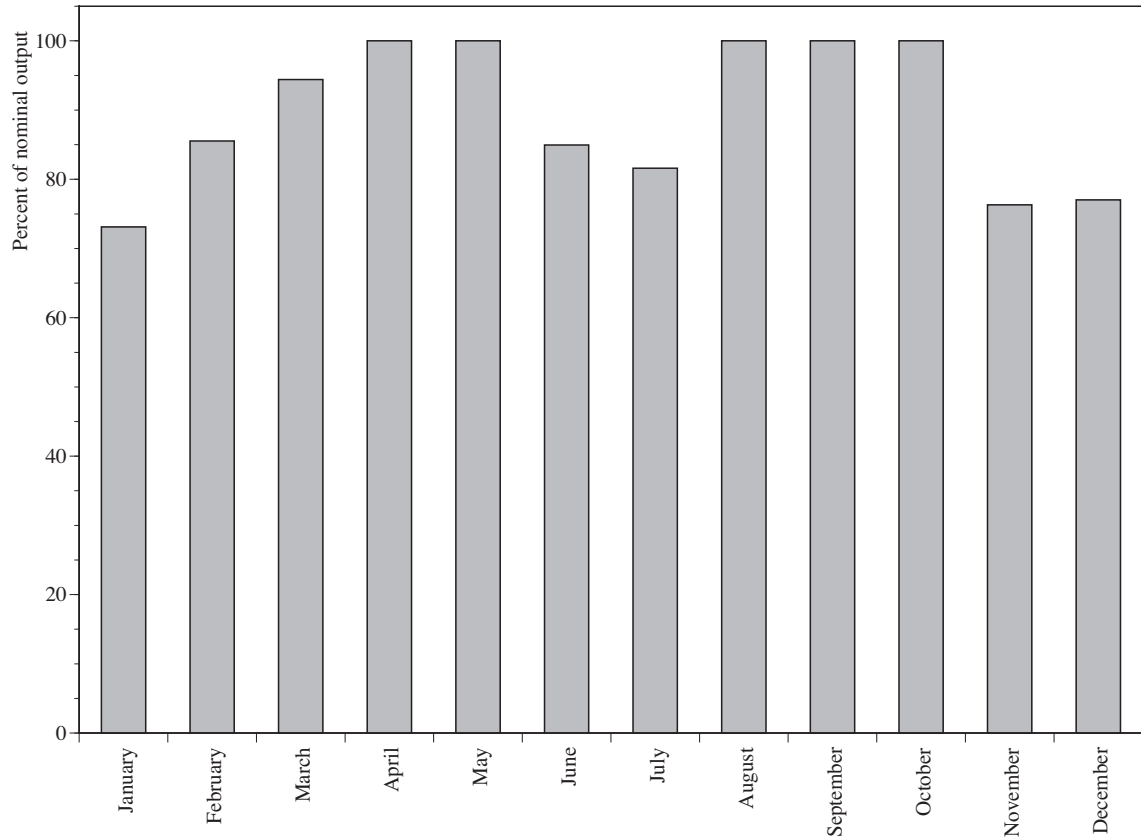
Source: ERJ, Datasource : River Bureau Ministry of Land, Infrastructure and Transport.

Figure 138 : Percentage of nominal output of Hydropower in Kanto.



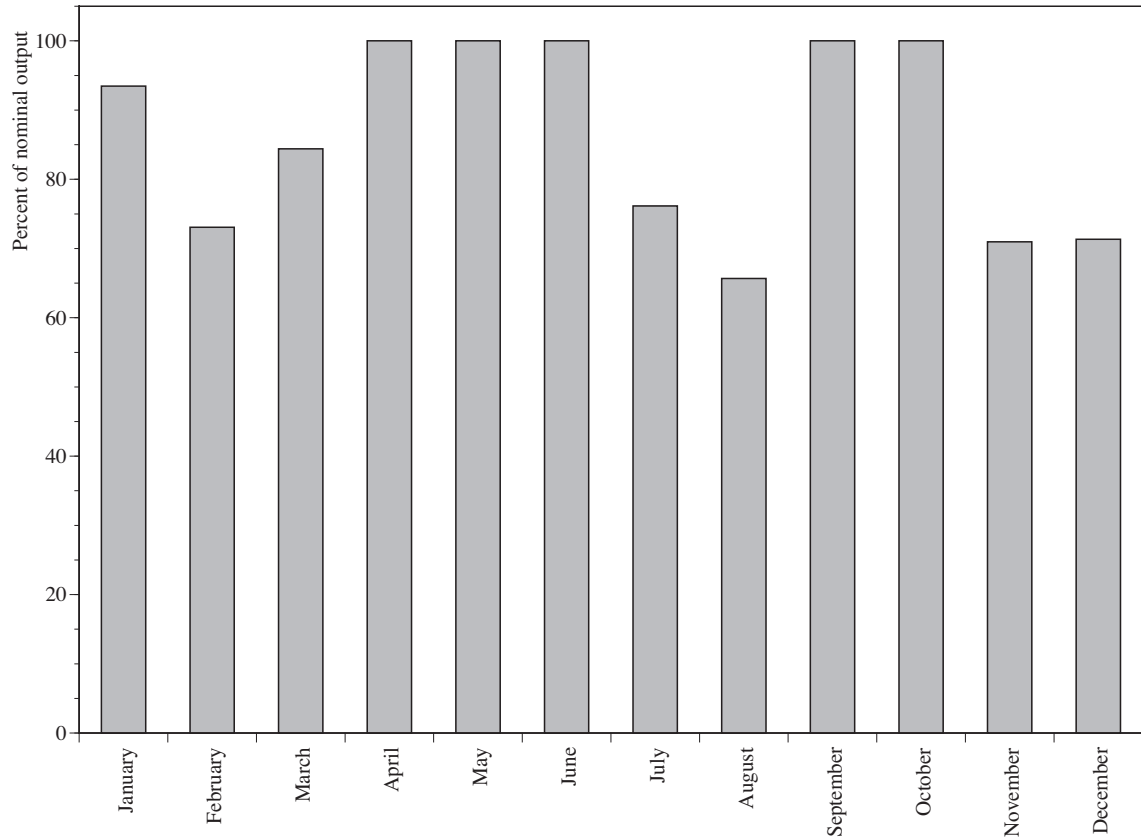
Source: ERJ, Datasource : River Bureau Ministry of Land, Infrastructure and Transport.

Figure 139 : Percentage of nominal output of Hydropower in Chubu.



Source: ERJ, Datasource : River Bureau Ministry of Land, Infrastructure and Transport.

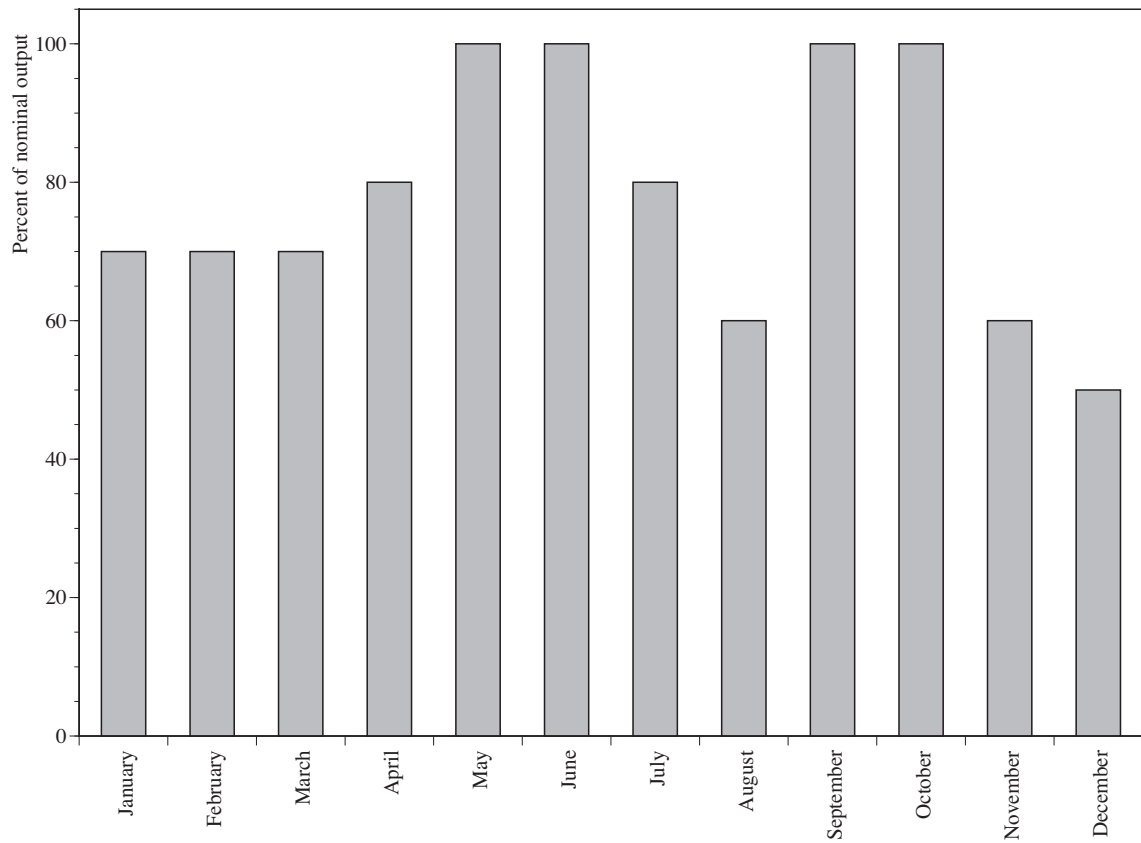
Figure 140 : Percentage of nominal output of Hydropower in Hokuriku.



Source: ERJ, Datasource : River Bureau Ministry of Land, Infrastructure and Transport.

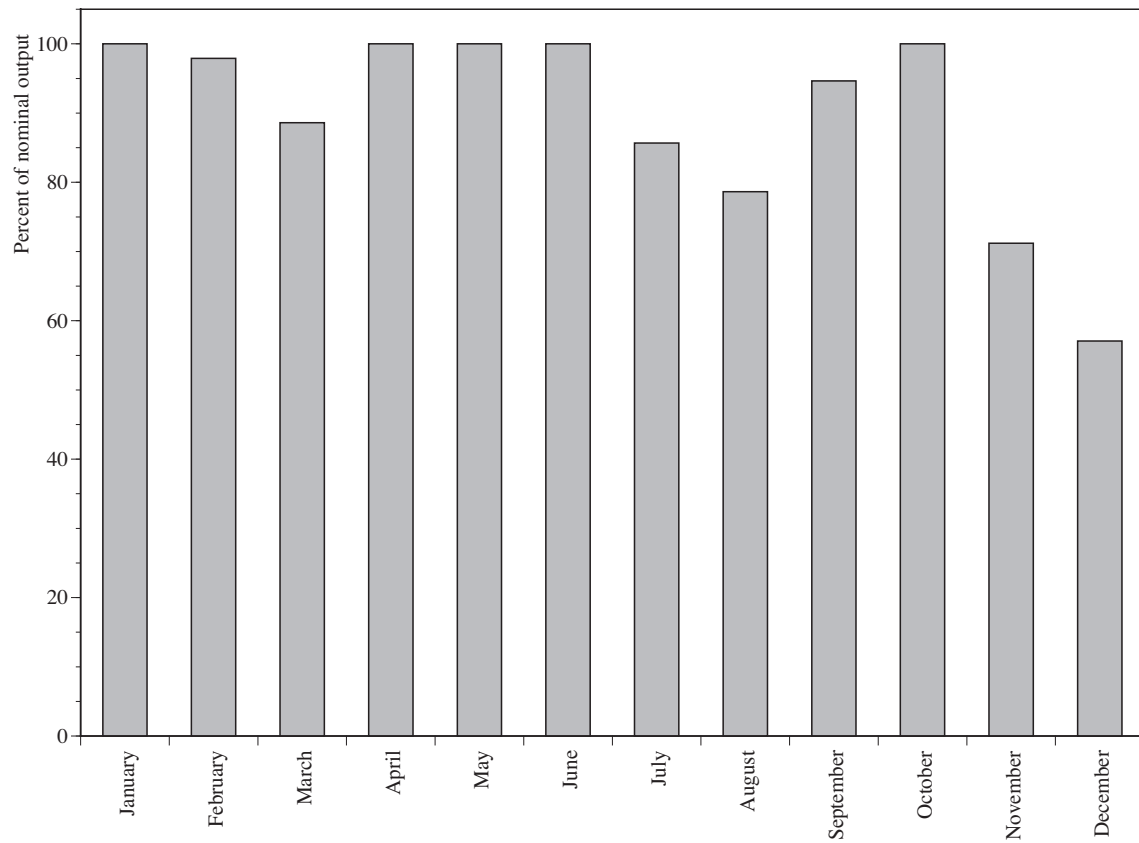
Figure 141 : Percentage of nominal output of Hydropower in Kansai.





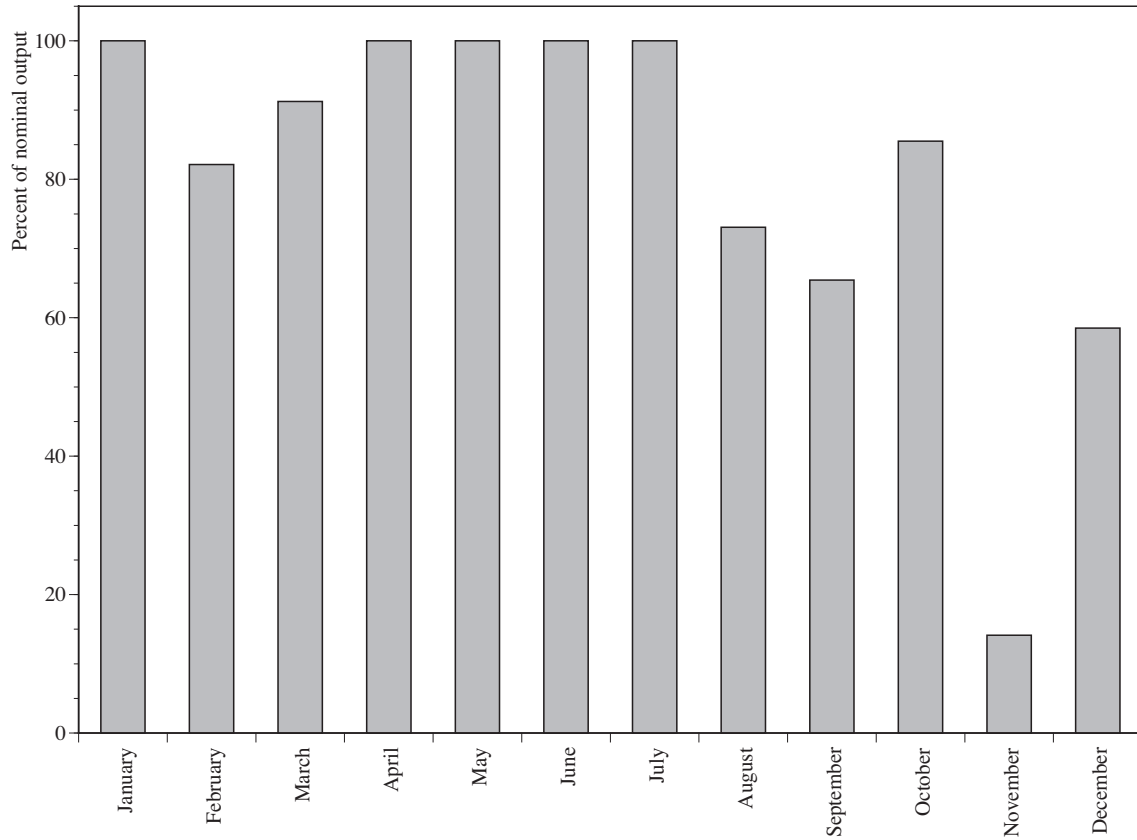
Source: ERJ, Datasource : River Bureau Ministry of Land, Infrastructure and Transport.

Figure 142 : Percentage of nominal output of Hydropower in Shikoku.



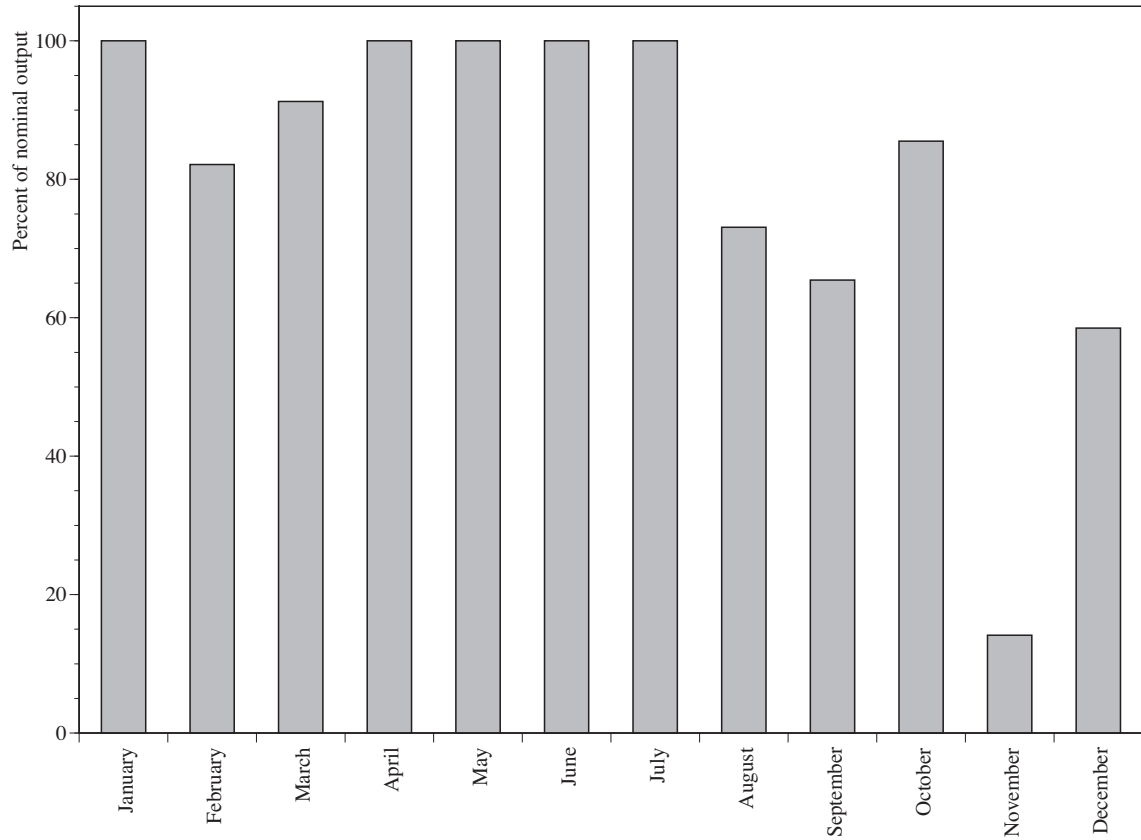
Source: ERJ, Datasource : River Bureau Ministry of Land, Infrastructure and Transport.

Figure 143 : Percentage of nominal output of Hydropower in Chugoku.



Source: ERJ, Datasource : River Bureau Ministry of Land, Infrastructure and Transport.

Figure 144 : Percentage of nominal output of Hydropower in Kyushu South.



Source: ERJ, Datasource : River Bureau Ministry of Land, Infrastructure and Transport.

Figure 145 : Percentage of nominal output of Hydropower in Kyushu North.